

Weekly Safety Tip



“Your Connection for Workplace Safety”

Phone: 920-208-7520

We're about service, commitment, results, and accountability!

SCI Safety Tip: Eye Protection

Source: www.nsc.org

Date: April 2009

Our Weekly Safety Tip provides valuable and current safety information relevant for Work, Home & Play.

And, you will be kept current on the latest Safety Compliance issues.



SCI SAFETY NEWS OR TIP



SCI OSHA NEWS OR COMPLIANCE



SCI HEALTHYLIVING and WELLNESS NEWS

We want to hear from you! Send us your feedback and give us ideas for future safety topics.

Let us know how you feel about our new look!

Safety Slogan

Focus on Safety!

James Lehrke-SCI

of the week

Typical eye injuries occur by rubbed or abraded foreign matter, such as metal chips, dirt particles and splinters, or by striking the eye. Surface wounds, such as abrasions, scratches and foreign bodies (splinters and chips), are among the most common types of injuries to the eyes. Other hazards include, but are not limited to chemicals, adhesives, radiation, tools and equipment. The highest categories contributing to eye injuries are related to household, workplace and sports.

On-the-job eye protection

You may be exposed to several hazards at the same time. The right equipment can protect your eyes against irritation and injury. Ask your supervisor or industrial hygienist to help you select the right eye protection.

If you need prescription eyeglasses, make sure your goggles or spectacles have prescription eyeglass lenses or wear extra protection over your prescription eyeglasses.

Contact lenses do not provide protection from on-the-job eye hazards. If you wear contact lenses, be extra cautious around gases, vapors, fumes and dust. Wear eye protection equipment in addition to contact lenses. Follow the specific management policies on contact lenses in your workplace.

Spectacles – Semi/flat-folded sideshield. Provides primary protection against impact and optical radiation. Sideshield spectacles are recommended.

• **Goggles** – There are many different kinds of goggles that vary in appearance and protection. Flexible fitting, regular ventilation. Cushions the face, protects eyes at sides, top and bottom.

- Flexible fitting, hooded ventilation. Protects against impact, sparks, chemical splashes and dust. Cushioned fit, rigid body. Protects against impact, sparks, chemical splashes, irritating mists and dust.
- Welding goggles, eyecup type, filter lenses. Protects against glare, sparks and welding flash.
- Chipping goggles, eyecup type, clear safety lenses. Protects against hot sparks and nuisance dust.

• **Face Shield** – Plastic or mesh window. Designed to protect the whole face; must be supplemented with safety glasses.

- **Welding Helmet** – Stationary window or lift-front window. Protects from welding, soldering and brazing. Must be supplemented with safety glasses.

Off-the-job eye protection

Four out of ten accidents that cause blindness happen at home. Off-the-job eye injuries happen because of:

- Do-it-yourself work on cars and homes.
- Cooking accidents.
- Chemical splashes from pesticides, fertilizers, drain cleaners and cleaning sprays.
- Sports injuries while playing tennis, racquetball, baseball, etc.
- Yard work from cutting grass, trimming trees/bushes and using a weed wacker.

Wear the right protection for the job you are doing

- Choose sunglasses that offer protection from the sun's ultraviolet rays.
- Wear eye protection while doing repair jobs and working with chemicals at home.
- Wear eye protection when playing ball sports.
- Wear eye protection over contact lenses and prescription eyeglasses.

OSHA Compliance News: New Injury and Illness Prevention Program Rule Considered by OSHA

Source: <http://www.blr.com>

Date: May 5, 2010

OSHA is considering a proposed rule for a formal Injury and Illness Prevention Program and will hold informal stakeholder meetings on the proposal. The proposal would require employers to develop a formal program to reduce workplace injuries and illnesses through a systematic process that proactively addresses workplace safety and health hazards.

On the basis of OSHA's experience with workplace safety programs, a proposed rule would include the following elements:

- Management duties
- Employee participation
- Hazard identification
- Hazard prevention and control
- Education and training
- Program evaluation and improvement

Injury and Illness Prevention Program State Requirements

There are 24 states that require a written injury and illness prevention program for certain industries, mostly as a requirement for worker's compensation insurance coverage. 16 states offer discounts on workers' compensation premium rates of up to 5 percent for qualifying organizations that voluntarily adopt and implement written safety and health programs.

California, for example, requires employers to have formal written injury and illness prevention programs. BLR has prepared written **tips and considerations** to help employers develop an injury and illness prevention program based on California's requirements, and they cover OSHA's proposed program elements:

- [Tips for high hazard workplaces](#)
- [Tips for low hazard workplaces](#)

SCI's brings solutions to safety!

SCI Testimonial

Seminar Response

I enjoyed the seminar and especially the way to keep the audience involved! There are a lot of "consultants" out there training on the same old "stuff", but your presentation keep me interested throughout the session. Being a past Administrator for States Workers Compensation program, I know how important training is to keep safety on the minds of everyone all the time. Currently I am the HR/Safety director of a local printing company and know the challenge first hand.

*Thanks again for a great program
Keep up the good work*

OSHA Stakeholder Meeting Schedule

The dates and locations for the stakeholder meetings are:

- June 3, 2010, 8:30 a.m. to 4:30 p.m. in East Brunswick, NJ.
- June 10, 2010, 8:30 a.m. to 4:30 p.m in Dallas, TX.
- June 29, 2010, 8:30 a.m. to 4:30 p.m in Washington, DC.

The deadlines for confirmed registration at each meeting are May 20, May 27, and June 15, 2010 respectively. For more information on how to register for the upcoming meetings and OSHA's history with safety and health programs, see the [May 4 Federal Register](#) for more information about the meetings.

OSHA Provides Incentives for Injury and Illness Prevention Programs

OSHA has a policy of reducing penalties for employers who have violated OSHA standards but who have demonstrated a good faith effort to provide a safe and healthy workplace to their employees. The Agency has long recognized the

SCI Health News: Broccoli Component Limits Breast Cancer Stem Cells

Source: www.mercola.com

Date: May 7, 2010



Let us know how you feel about our new look! Send us an email at:

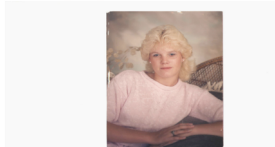
jlconnections@aol.com

See us at:

<http://www.safetyconnections.com>

In Loving

Memory of Jessica Lehrke



Sulforaphane, a compound found in broccoli, could help treat breast cancer by targeting cancer stem cells, which fuel the growth of tumors. Sulforaphane was tested in both mice and cell cultures. It targeted and killed the cancer stem cells. and prevented new tumors from growing.

Science Daily reports:

"Current chemotherapies do not work against cancer stem cells, which is why cancer recurs and spreads. Researchers believe that eliminating the cancer stem cells is key to controlling cancer."

Source Link: [Science Daily May 5, 2010](#)